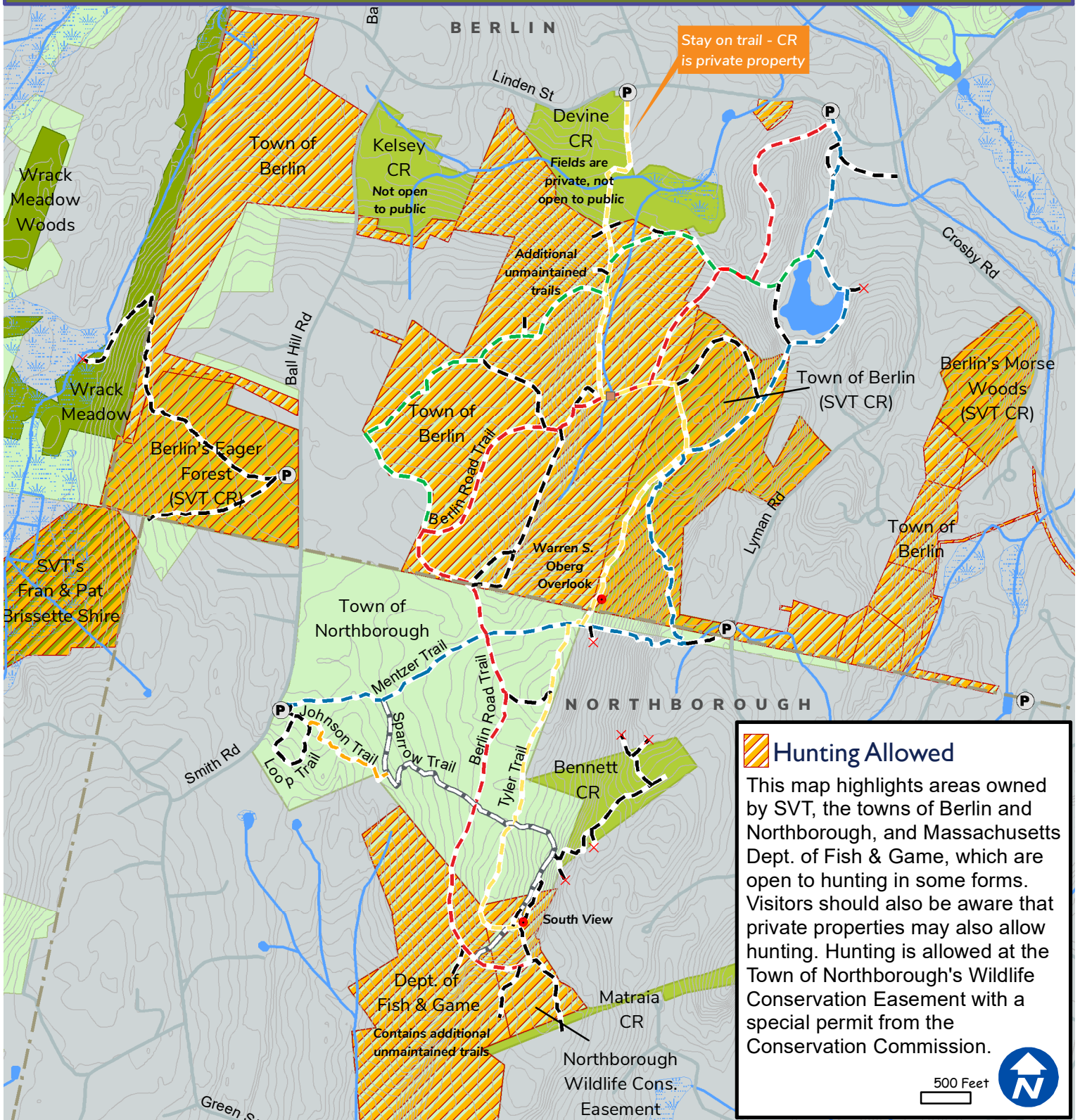


Mount Pisgah, Berlin and Northborough



Hunting Allowed

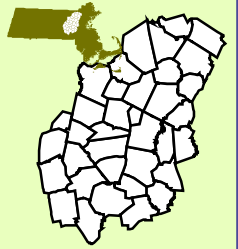
This map highlights areas owned by SVT, the towns of Berlin and Northborough, and Massachusetts Dept. of Fish & Game, which are open to hunting in some forms. Visitors should also be aware that private properties may also allow hunting. Hunting is allowed at the Town of Northborough's Wildlife Conservation Easement with a special permit from the Conservation Commission.

500 Feet

- Parking Trail Water Body Road SVT CR
- Bridge Private Wetland SVT Other Owner



Download Map



Love open spaces? Support SVT!

Sudbury Valley Trustees is a nonprofit conservation organization that protects land for the benefit of people and wildlife. Help us keep these trails open for all to enjoy. **Join or Donate today! www.svtweb.org**

Map produced by Sudbury Valley Trustees. Data Provided by Office of Geographic and Environmental Information (MassGIS), Commonwealth of Massachusetts Executive Office of Energy and Environmental Affairs. This Map should be used for reference only. Boundary lines are approximate.