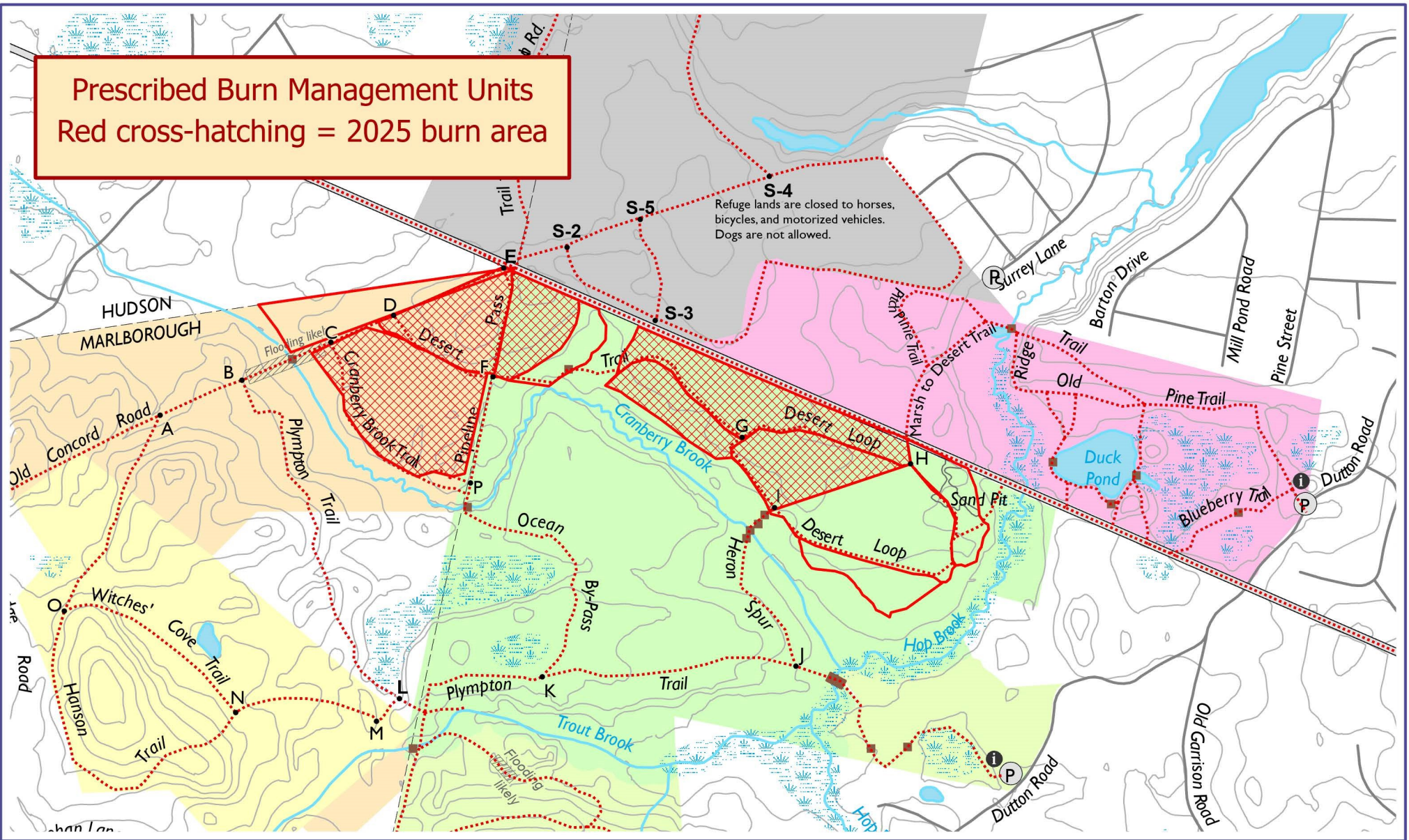


Prescribed Burn Management Units
 Red cross-hatching = 2025 burn area



S-4
 Refuge lands are closed to horses, bicycles, and motorized vehicles. Dogs are not allowed.

- Junction
- Ⓟ Parking
- ⓘ Kiosk
- Bridge
- Abandoned Railroad
- ⋯ Trail
- Stream
- Pond
- Wetland
- SVT: GFWCM Memorial Forest
- Town of Sudbury: Hop Brook Marsh
- City of Marlborough: Desert Conservation Land
- DCR: Marlborough-Sudbury State Forest
- Assabet River National Wildlife Refuge
- General Federation of Women's Clubs of Mass.

Desert Natural Area

Marlborough and Sudbury, MA

