



About This Property

Baiting Brook Meadow Farm spans 88 acres off Nixon Road in Framingham. The trails on this land, which is still privately owned, connect to trails on Callahan State Park, SVT's Baiting Brook-Welch and Henry's Hill Reservations, and the Town of Framingham's Wittenborg Woods.

SVT worked with the state and private landowners to protect this property and augment the mix of forest, open field, and water resources that makes northwest Framingham a good place for wildlife. SVT holds a conservation restriction (CR) on the land, limiting its development. We annually monitor the land to maintain its conservation values.

Please note: Baiting Brook Meadow Farm is privately owned. Please respect posted rules, follow the signs, and stay on marked trails.

Features of Note

- The CR grantors have used the fields of Baiting Brook Meadow Farm as a Christmas tree farm.
- These extensive woodlands provide habitat for forest interior birds such as the scarlet tanager, red-eyed vireo, eastern wood pewee, and wood thrush. Larger mammals like fox, coyote, fisher, and mink call the area home as well.
- Much of the soils are classified with agricultural importance. The eastern half of the property is almost entirely designated as "prime farmland," meaning it has the best combination of physical and chemical characteristics for producing food, feed, forage, fiber, and oilseed crops.
- Callahan State Park is the entry point for these trails. Callahan State Park includes some 100 acres of open field, with 70 of those acres under agricultural leases. Other portions are simply mowed annually, like the field that rises from the eastern shore of Beebe Pond and climbs the lower slopes of Gibbs Mountain, a lovely spot at any time of year and exciting if you're on skis!

Learn more:
www.svtweb.org/BBMeadowFarm



Trail Policies and Regulations

These policies apply to SVT properties on the map. Properties owned by other entities have their own posted policies.

The following are prohibited:

- Motorized vehicles
- Hunting or trapping
- Camping
- Bicycling
- Fires
- Disposing of trash or yard waste
- Cutting or removing plants



Dog walkers:

- Pick up and dispose of dog waste.
- Keep dogs on trails.
- Keep dogs out of ponds/streams/vernal pools.
- Put dogs on a leash when other hikers approach.

See our full dog-walking policy on the trail head kiosk.

Directions

With mapping software, search for this address:
241-243 Broadmeadow Street, Marlborough, MA

From the intersection of Edgell Road and Edmands Road in Framingham, follow Edmands Road west for 3.0 miles. The road name changes to Parmenter Road. Continue on Parmenter Road for 1.5 miles. Turn right onto Broadmeadow Street. Go for 0.3 mile to the parking lot on the left. (The last 0.2 mile is a dirt road.)

Support SVT

SVT protects open spaces and natural areas in 36 communities around the Sudbury, Assabet, and Concord Rivers. We care for thousands of acres of land that provide habitat for native wildlife, and we maintain more than 60 miles of trails for public enjoyment.

SVT relies upon the support of our members to be successful.

Join Us! Help protect these lands forever.
www.svtweb.org

Baiting Brook Meadow Farm CR Trail Map



FRAMINGHAM AND MARLBOROUGH

This map includes trails that cross properties owned and maintained by Callahan State Park, Dept. of Conservation and Recreation Water Supply Protection, and private landowners.

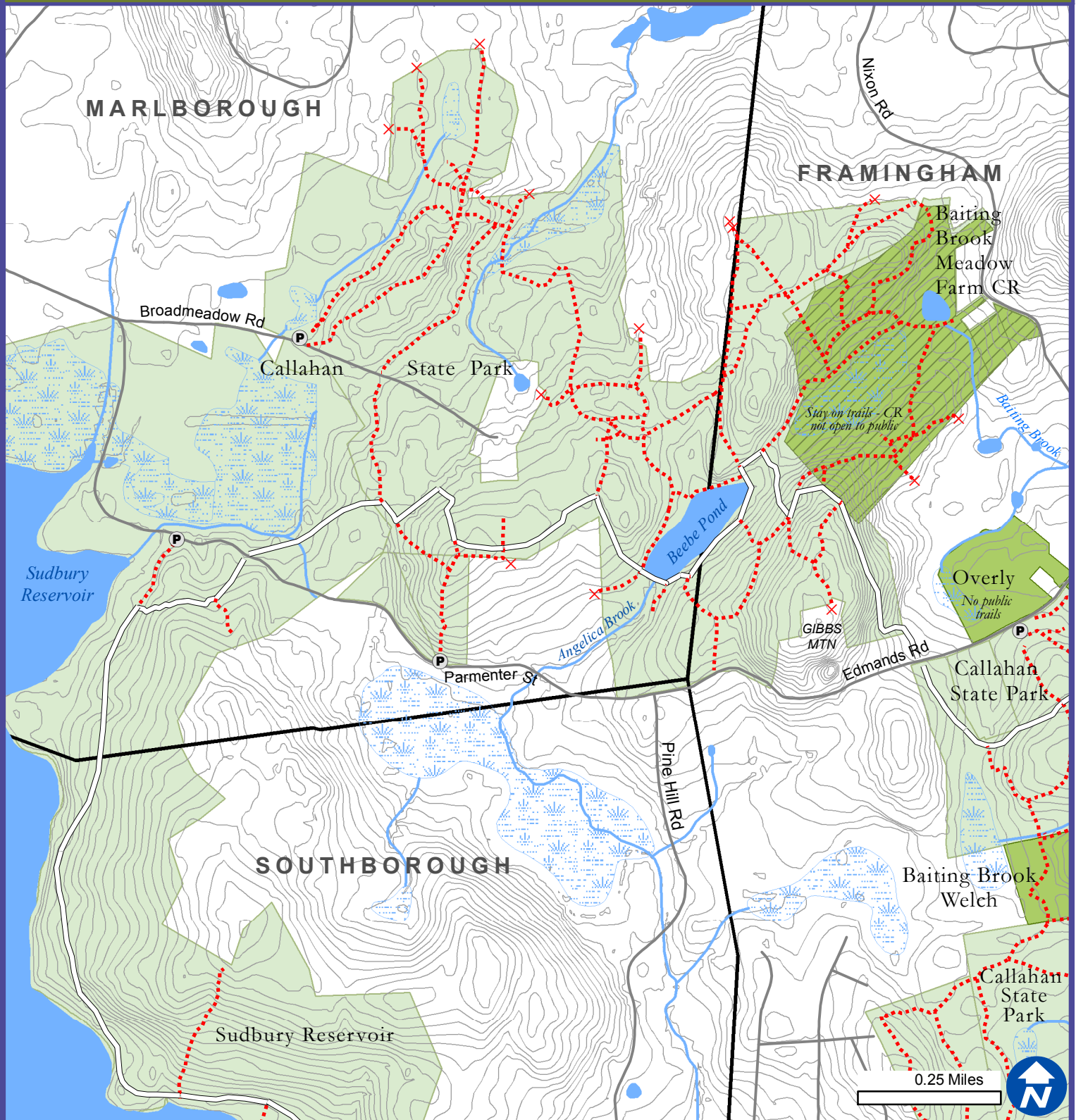
Please respect private property and stay on the trails.



18 Wolbach Road
Sudbury, MA 01776-2429
978-443-5588

www.svtweb.org
Facebook: @SudburyValleyTrust
Twitter: @TweetSVT
Instagram: sudbury_valley_trustees

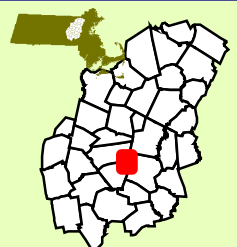
BAITING BROOK MEADOW FARM CR



- P Parking Trail Water Body Road SVT CR BCT
 Bridge Private Wetland SVT Other Owner



How to
Get Here



Love open spaces? Support SVT!

Sudbury Valley Trustees is a nonprofit conservation organization that protects land for the benefit of people and wildlife. Help us keep these trails open for all to enjoy. **Join or Donate today! www.svtweb.org**

Map produced by Sudbury Valley Trustees. Data Provided by Office of Geographic and Environmental Information (MassGIS), Commonwealth of Massachusetts Executive Office of Energy and Environmental Affairs. This Map should be used for reference only. Boundary lines are approximate.