



About This Property

Wiley Woods is a 15.88-acre parcel donated to the Hopkinton Area Land Trust (HALT) in 1997. Wiley Woods was the first property acquired by HALT and is named after one of the founders of the trust.

HALT donated a conservation restriction (CR) on the land to SVT in 2001. We are responsible for annually monitoring the land to ensure it retains its conservation values.

Features of Note

- The trail passes first through a dense red maple swamp that is thickly carpeted and quite wet. Other trees here include birches, red oak, and white pine with various viburnums and ferns in the understory.
- After you follow the trail across a stream, you will notice the land starts to rise in elevation. Here, the trail enters a mature upland mixed hardwood forest that is less densely packed and is carpeted in pine needles and hay-scented ferns.
- Walkers can pause at two benches along the trail, one in the lowland area and one in the upland area.

Learn more:

www.svtweb.org/WileyWoods



Trail Policies and Regulations

These policies apply to SVT properties on the map. Properties owned by other entities have their own posted policies.

The following are prohibited:

- Motorized vehicles
- Hunting or trapping
- Camping
- Bicycling
- Fires
- Disposing of trash or yard waste
- Cutting or removing plants



Dog walkers:

- Pick up and dispose of dog waste.
- Keep dogs on trails.
- Keep dogs out of ponds/streams/vernal pools.
- Put dogs on a leash when other hikers approach.

See our full dog-walking policy on the trail head kiosk.

Directions

With mapping software, search for this address: 92-96 Frankland Road, Hopkinton, MA

From Route I-495, take Exit 21A. Head east on West Main Street toward Hopkinton. Go 2.5 miles (the road name changes to East Main Street along the way). Turn left onto Legacy Farms Road North. Go 0.3 mile. Turn right onto Frankland Road. Go 1.0 mile. Parking and trail access are on the right, between house numbers 92 and 96.

Support SVT

SVT protects open spaces and natural areas in 36 communities around the Sudbury, Assabet, and Concord Rivers. We care for thousands of acres of land that provide habitat for native wildlife, and we maintain more than 60 miles of trails for public enjoyment.

SVT relies upon the support of our members to be successful.

Join Us! Help protect these lands forever.

www.svtweb.org

Wiley Woods Conservation Restriction Trail Map



HOPKINTON

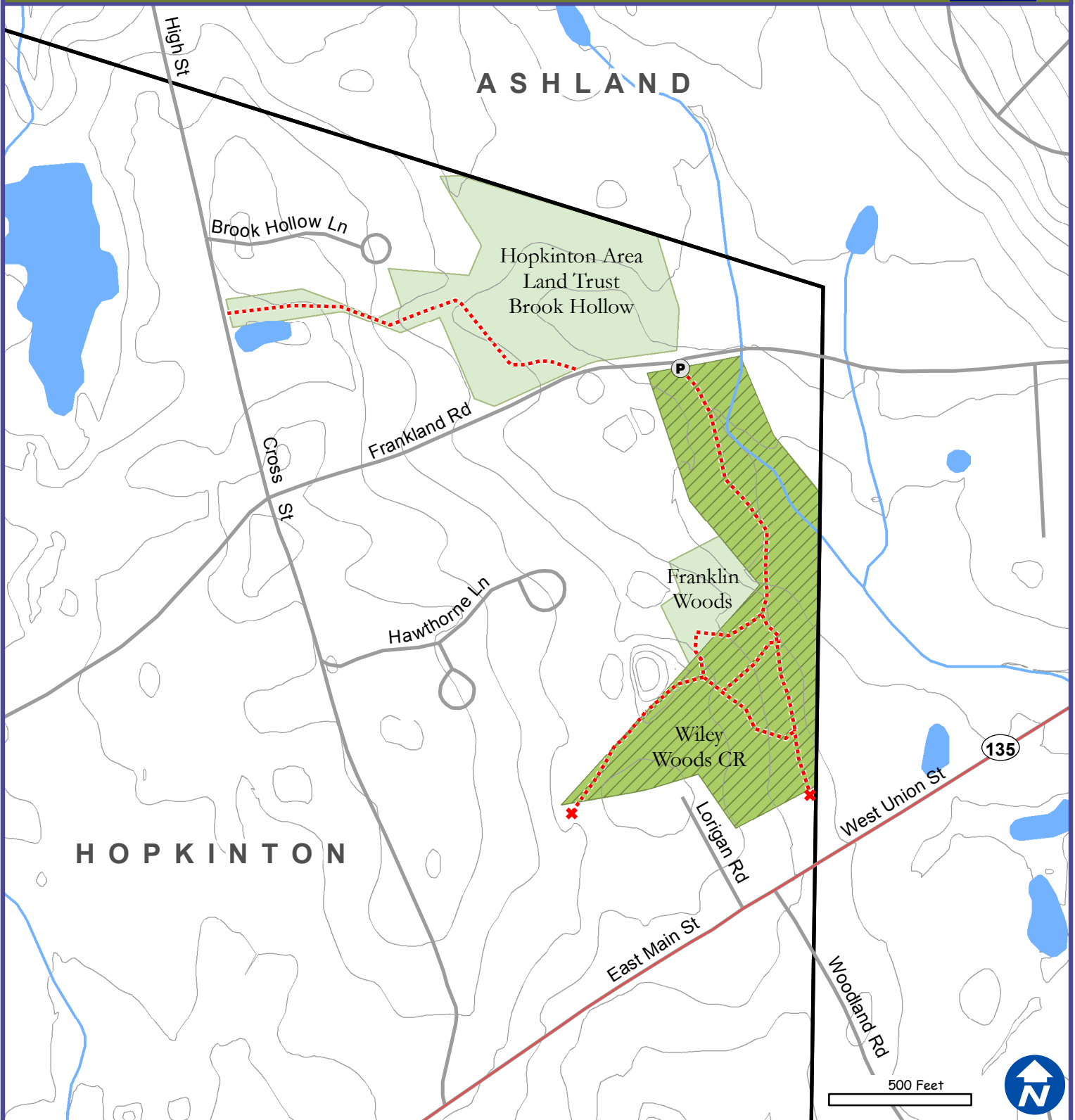
This map includes trails that cross properties owned and maintained by Hopkinton Area Land Trust.



18 Wolbach Road
Sudbury, MA 01776-2429
978-443-5588

www.svtweb.org
Facebook: @SudburyValleyTrust
Twitter: @TweetSVT
Instagram: sudbury_valley_trustees

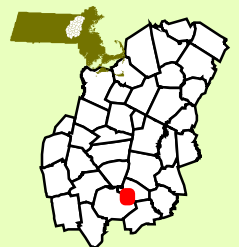
WILEY WOODS CR, HOPKINTON



- Parking
 Trail
 Water Body
 Road
 SVT CR
- Bridge
 Private
 Wetland
 SVT
 Other Owner



How to
Get Here



Love open spaces? Support SVT!

Sudbury Valley Trustees is a nonprofit conservation organization that protects land for the benefit of people and wildlife. Help us keep these trails open for all to enjoy. **Join or Donate today! www.svtweb.org**