



About This Property

SVT's Whitehall Woods is situated between Upton State Forest and Whitehall State Park. Together these properties form over 2,600 continuous acres of conservation land.

Whitehall Woods consists of varied terrain and habitat type including white pine-red oak forest with scattered pockets of red maple in lowland areas. A large vernal pool is located near the trail head.

The land was protected in October 2016 in partnership with Hopkinton Area Land Trust (HALT), which owns a conservation restriction on the property. HALT works with SVT to maintain the land's conservation values and ensure that the property is protected in perpetuity. The trails were opened to the public in June 2017.

Features of Note

- Whitehall Woods is home to a trail that can be used to access the adjacent Upton State Forest.
- Across the street lies the Whitehall Reservoir, which is a part of a reserve of drinking water system for eastern Massachusetts and connects to a tributary of the Sudbury River.
- There is evidence of coyote and deer on the property. The vernal pool hosts wood frogs and peepers, and possibly other species as well. Birds on the property include scarlet tanager, chickadees, blue jay, and tufted titmice.
- For further exploration, hikers can venture through Upton and into Grafton. Use the Upton State Forest Trails to connect with the Town of Upton's Whitney Conservation Area and beyond. For a trail map, see the Sweetwilliam link listed below.

Learn more:

www.svtweb.org/WhitehallWoods
www.svtweb.org/Sweetwilliam



Trail Policies and Regulations

These policies apply to SVT properties on the map. Properties owned by other entities have their own posted policies.

The following are prohibited:

- Motorized vehicles
- Hunting or trapping
- Camping
- Fires
- Disposing of trash or yard waste
- Cutting or removing plants



Dog walkers:

- Pick up and dispose of dog waste.
- Keep dogs on trails.
- Keep dogs out of ponds/streams/vernal pools.
- Put dogs on a leash when other hikers approach.

See our full dog-walking policy on the trail head kiosk.

Directions

With mapping software, search for this address:
203 Pond Street, Hopkinton, MA

From I-495, take Exit 21B. Turn onto West Main Street toward Upton. Turn right at the first cross street onto West Elm Street. Go 0.4 miles. Turn right onto Pond Street. Go about 1.9 miles to the entrance of a new subdivision road on the west side of Pond Street. Follow that road to a small gravel parking lot and trailhead kiosk on the left.

Support SVT

SVT protects open spaces and natural areas in 36 communities around the Sudbury, Assabet, and Concord Rivers. We care for thousands of acres of land that provide habitat for native wildlife, and we maintain more than 60 miles of trails for public enjoyment.

SVT relies upon the support of our members to be successful.

Join Us! Help protect these lands forever.
www.svtweb.org

Whitehall Woods Trail Map



HOPKINTON AND UPTON

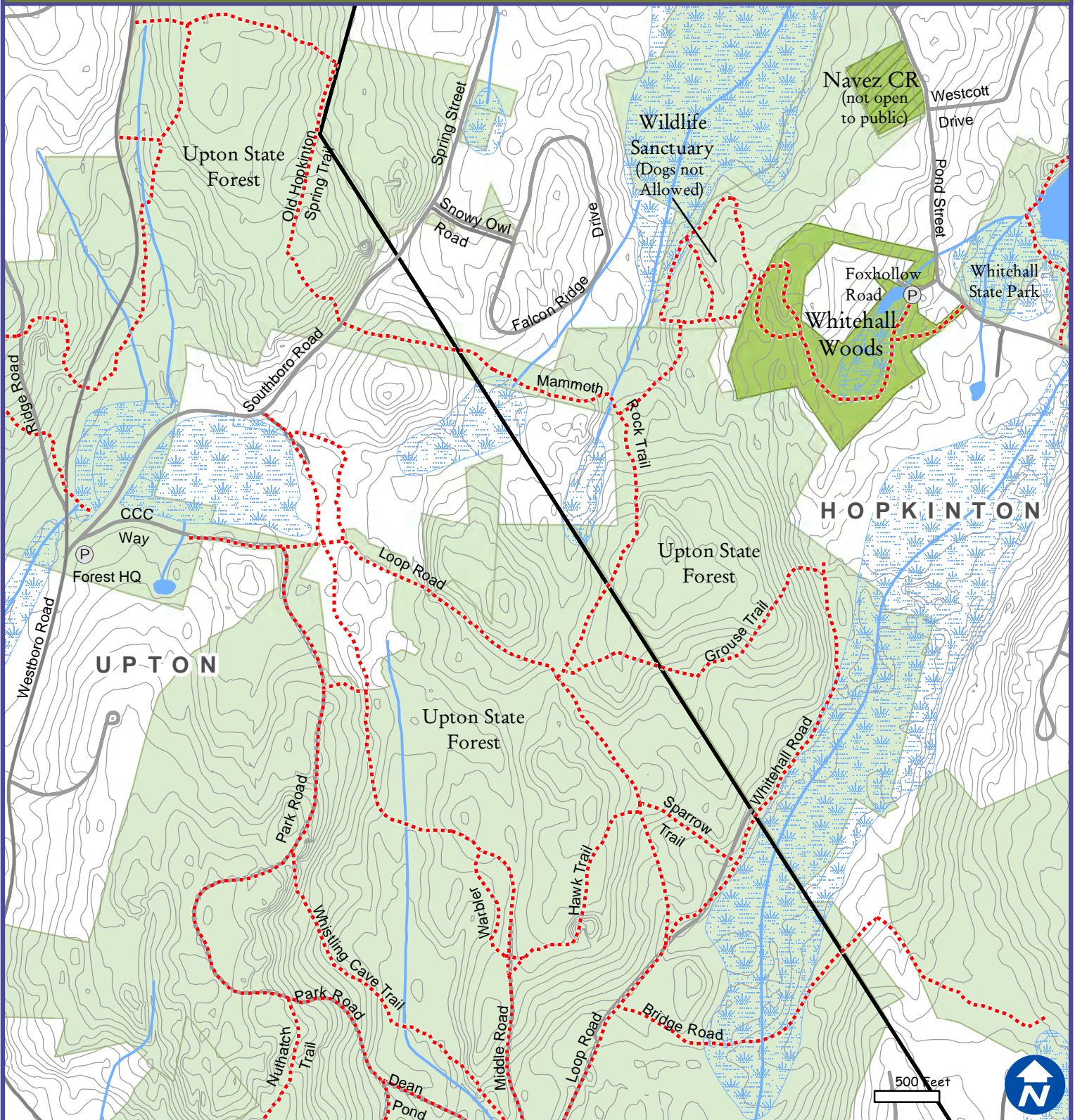
This map includes trails that cross properties owned and maintained by Upton State Forest and Whitehall State Park.



18 Wolbach Road
Sudbury, MA 01776-2429
978-443-5588
www.svtweb.org

Facebook: @SudburyValleyTrust
Twitter: @TweetSVT
Instagram: sudbury_valley_trustees

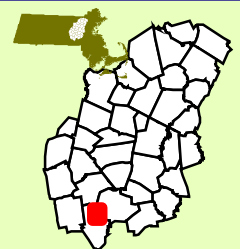
Whitehall Woods, Hopkinton



- Parking
 Water Body
 Road
 SVT CR
 Trail
- Bridge
 Wetland
 SVT
 Other Owner



How to
Get Here



Love open spaces? Support SVT!

Sudbury Valley Trustees is a nonprofit conservation organization that protects land for the benefit of people and wildlife. Help us keep these trails open for all to enjoy. **Join or Donate today! www.svtweb.org**