

About This Property

In a relatively remote area along the Ashland-Framingham boundary, Ashland Town Forest and the adjoining Cowassock Woods cover more than 550 acres of forest, laced with trails.

SVT acquired the 50-plus acres of Cowassock Woods in two stages in 1984 and 1992, after a developer's plan for a residential subdivision at the site fell through. Evidence of these plans are still seen along the trails today.

Features of Note

- Cowassock means "the place of the pines," which provided a spring and summer campground for Magunkook Indians. Evidence of Native American occupation includes spear and arrow points, as well as documentation of their sale of land to early colonists.
- Colonial history here is also fascinating. Families fleeing the Salem witch trials sought refuge in this wilderness, and it is believed they lived in the caves (now collapsed) in the Ashland Town Forest, just south of the water tower.
- The land's varied natural history, matches its varied human use. The topography features rock outcroppings, steep slopes, scattered wetlands, vernal pools, several open pit quarries, and a mixed hardwood forest.
- A portion of one of the trails in Town Forest has been designated as part of the Bay Circuit Trail (BCT), which stretches 200 miles through eastern Massachusetts, from Plum Island on the North Shore to Kingston on the South Shore. The BCT is marked by white trail blazers; markers of other colors identify the rest of the trail system.
- Woodpecker, woodcock, wood thrush, red-tailed hawk, turkey vulture, and ruffed grouse have been seen here. One inhabitant of particular interest is the blue-spotted salamander, a species of special concern in Massachusetts.

Learn more:
www.svtweb.org/Cowassock

Trail Policies and Regulations

These policies apply to SVT properties on the map. Properties owned by other entities have their own posted policies.

The following are prohibited:

- Motorized vehicles
- Hunting without a permit or trapping
- Camping
- Bicycling
- Fires
- Disposing of trash or yard waste
- Cutting or removing plants



Dog walkers:

- Pick up and dispose of dog waste.
- Keep dogs on trails.
- Keep dogs out of ponds/streams/vernal pools.
- Put dogs on a leash when other hikers approach.

See our full dog-walking policy on the trail head kiosk.

Directions

With mapping software, search for this address:
886-890 Salem End Road, Framingham, MA

If driving south on Edgell Road, cross Route 9 and take an immediate right onto High Street. Go 0.3 mile. The road's name changes to Salem End Road. Go about 1 mile to a three-way intersection. Take the middle option to stay on Salem End Road. Go about 0.8 mile. Parking and trail access is on the left between 886 and 890 Salem End Road.

Support SVT

SVT protects open spaces and natural areas in 36 communities around the Sudbury, Assabet, and Concord Rivers. We care for thousands of acres of land that provide habitat for native wildlife, and we maintain more than 60 miles of trails for public enjoyment.

SVT relies upon the support of our members to be successful.

Join Us! Help protect these lands forever.
www.svtweb.org

Cowassock Woods and Ashland Town Forest Trail Map



FRAMINGHAM AND ASHLAND

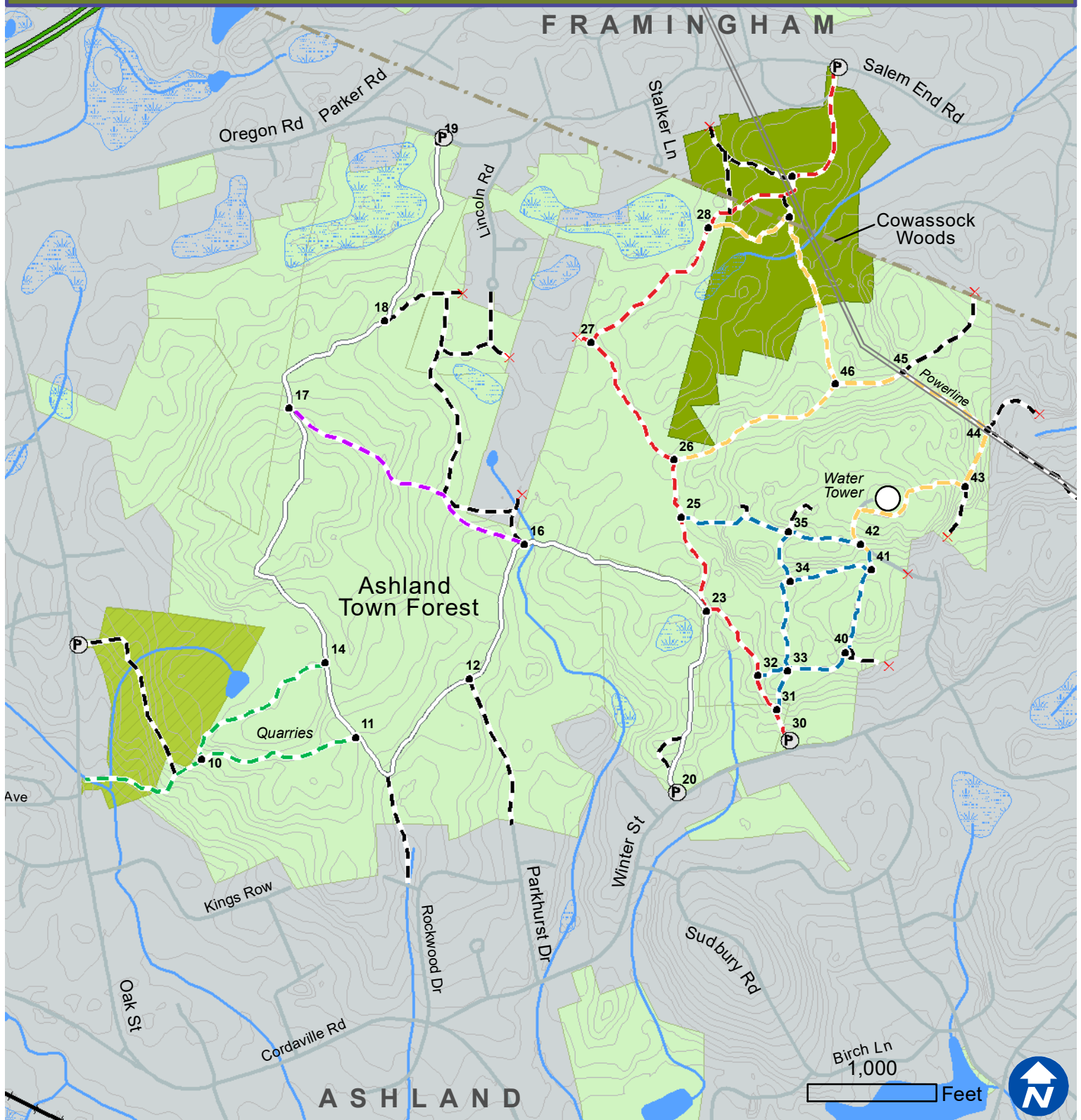
This map includes trails that cross properties owned and maintained by the Town of Ashland.



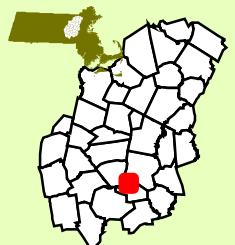
18 Wolbach Road
Sudbury, MA 01776-2429
978-443-5588

www.svtweb.org
Facebook: @SudburyValleyTrust
Twitter: @TweetSVT
Instagram: sudbury_valley_trustees

Cowassock Woods and Ashland Town Forest



- P Parking
 Trail
 Water Body
 Road
 SVT CR
 SVT
 Other Owner
 Bridge
 Private
 Wetland



How to Get Here

Love open spaces? Support SVT!

Sudbury Valley Trustees is a nonprofit conservation organization that protects land for the benefit of people and wildlife. Help us keep these trails open for all to enjoy. **Join or Donate today! www.svtweb.org**

Map produced by Sudbury Valley Trustees. Data Provided by Office of Geographic and Environmental Information (MassGIS), Commonwealth of Massachusetts Executive Office of Energy and Environmental Affairs. This Map should be used for reference only. Boundary lines are approximate.