



## Yes! I want to support conservation.

### PLEASE ACCEPT MY MEMBERSHIP AT THE FOLLOWING LEVEL:

- \$5,000+ Marsh Wren Society
- \$250-\$499 Naturalist
- \$2,500-\$4,999 Benefactor
- \$100-\$249 Steward
- \$1,000-\$2,499 Trustee
- \$60-\$99 Family
- \$500-\$999 Conservationist
- \$40-\$59 Member

### Payment options:

- Join online: [www.svtweb.org/donate](http://www.svtweb.org/donate)
- Call SVT: 978-443-5588
- Mail this form
- For a gift of stock or securities, contact the Membership Office at 978-443-5588 x 111

### Payment method:

- Check (payable to Sudbury Valley Trustees)
- Credit card (MC, VISA, AmEx)

Account number \_\_\_\_\_  
 \_\_\_\_\_ Expiration date \_\_\_\_\_

Signature \_\_\_\_\_

Name \_\_\_\_\_

Address \_\_\_\_\_

Town \_\_\_\_\_ State \_\_\_\_\_ Zip \_\_\_\_\_

Home phone \_\_\_\_\_

Business phone \_\_\_\_\_

E-mail \_\_\_\_\_

### Help make your contribution go even further...

- I have a matching gift from my/my spouse's employer.
- Please send me information about volunteering for SVT.

Mail to:

Sudbury Valley Trustees  
 18 Wolbach Road  
 Sudbury, MA 01776



## Rules and Regulations

We welcome you to enjoy the trails for walking, skiing, snowshoeing, nature study, photography, and other quiet activities. Please carry out everything you carry in. Also please control your dog and clean up after it.

*In order to protect this natural area, the following are prohibited on SVT Reservations:*

- Motorized Vehicles
- Hunting or Trapping
- Camping
- Bicycling\*
- Fires
- Disposing of Trash or Yard Waste
- Cutting or Removing Plants

\* Bicycling is permitted at Callahan State Park and on the Pipeline Trail where it crosses SVT's Welch Reservation. Bicycles are not permitted on other SVT trails. All users need to be alert and courteous to others on the trail.

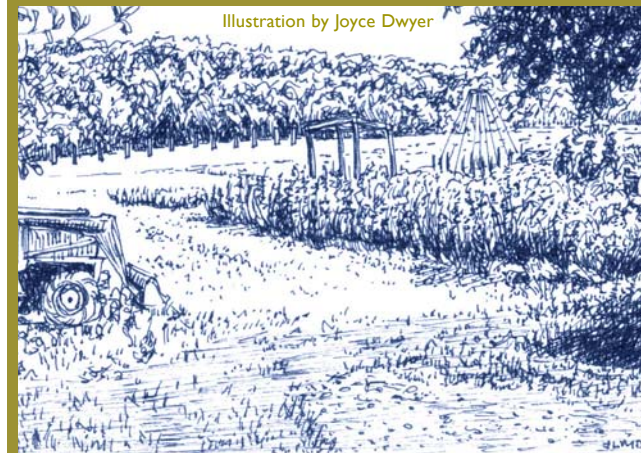
### Trail Use Guidelines at Callahan and Framingham Town Land

- Stay on designated trails and roads to protect rare vegetation and wildlife.
- Observe all posted rules and regulations.
- Motorized vehicles prohibited.
- Bicyclists: Control your bike. Do not skid. Do not startle horses or hikers. Announce your presence.
- Equestrians: Control your horse.
- Hikers: Allow bicyclists and equestrians to pass.

Sudbury Valley Trustees (SVT) is a regional land trust dedicated to the protection of the natural resources and wildlife habitat of the Sudbury, Assabet and Concord river basin. SVT carries out its work through land acquisition and stewardship, advocacy, and education throughout a 36-town region. SVT protects and cares for over 100 properties of conservation land that include wetlands, sensitive habitats, trails and other open spaces. SVT reservations are open to the public free of charge.



Illustration by Joyce Dwyer



## NORTHWEST FRAMINGHAM



SUDBURY  
 VALLEY  
 TRUSTEES

18 Wolbach Road  
 Sudbury, MA 01776  
 978-443-5588  
[www.svtweb.org](http://www.svtweb.org)

Despite its proximity to the highly developed downtown area, the northwest region of Framingham is home to nearly 1,000 acres of protected land and over 21 miles of trails. The Department of Conservation and Recreation's (DCR) Callahan State Park headlines the region's conservation efforts with over 800 acres of public park land. The Town of Framingham adds another 84 acres in Wittenborg Woods. Having also assisted both those organizations with land protection, Sudbury Valley Trustees (SVT) manages more than 200 acres of additional conservation land, acquired with the help of many Framingham neighbors and SVT members.

In particular, one donation from an SVT member embodies both the history and ethic of land conservation in northwest Framingham. During the post-WWII era when many of the local farms and orchards were converted into residential and commercial developments, Mrs. E Sohier Welch helped retain some of the region's quintessential New England character by donating an 87-acre parcel. In addition to significant forest habitat, the donation contained a 10-acre agricultural field, half of which was farmed by the Hanson family and half by Penelope Turton. Starting in 1954, Penelope Turton, a close friend of Mrs. Welch, had cultivated her half with organic vegetables and flowers. Nowadays, local residents of all ages come to continue Ms. Turton's passion by joining in community supported agriculture at what is now known as Stearns Farm CSA. The Hanson family continues to farm their half of the field and now also runs a CSA. With Stearns Farm, Eastleigh Farm and Hanson Farm all within a short walk, the local community benefits from some of the finest dairy, fruit and vegetables in the area.

In fact, much of the land conservation in northwest Framingham emphasizes the protection of the working agricultural landscape. The Harrington Fields contain mixed agricultural uses with Hanson Farm using part of the area for crop fields and the rest being used for horses and pasture for livestock. Moore Field at the Waters and Weir Reservation, Howe's Field, and most recently, Overly Farm are all also being used for horses and pasture. Last but certainly not least, the Christmas

Tree Farm at Baiting Brook Meadow Farm CR provides the opportunity for people to choose and harvest their favorite holiday tree. Despite the variety of uses, all of the donors of these properties expressed their desire to see their land continue the agrarian tradition.

In addition to the agrarian landscape, the forests and wetlands of the protected Framingham properties provide very good wildlife habitat. Forest interior birds, such as the scarlet tanager, red-eyed vireo, eastern wood pewee, and wood thrush thrive in the extensive pine and mixed oak woodlands of these reservations. Larger mammals, such as the fox, coyote, fisher and mink call the area home as well. Water resources such as Baiting Brook, Packard Pond and Eagle Pond in Callahan State Park and Baiting Brook Welch Reservation provide habitat for aquatic species as well as protected watershed area for the Sudbury River.

### **THE BAY CIRCUIT TRAIL**

The Bay Circuit Trail provides another highlight to the rich history of land conservation and recreation in northwest Framingham. First conceived in 1929, the BCT serves as a green corridor of recreational trails in the Greater Boston area. From Newburyport all the way around to Kingston, the publicly and privately owned trail meanders through 34 eastern Massachusetts towns, including Framingham. One can see the distinctive white trail markers from Callahan State Park and Baiting Brook Welch Reservation up to Wittenborg Woods. To learn more, visit [www.baycircuit.org](http://www.baycircuit.org)

### **MANAGEMENT**

SVT has been undertaking active management on its properties to preserve the ecological and aesthetic character of the land that is deeply valued by the community. Many wildlife species, especially birds and insects, benefit from open fields, an early successional habitat in decline as land changes towards more active use. As a result, SVT mows some of its properties annually to provide diverse habitats and maintain the aesthetic appeal to neighbors and other visitors. To view examples of this type of ecological management, visit SVT's Henry's Hill and Waters and Weir Fields.

Considered the second leading threat to healthy biodiversity after habitat destruction, invasive species can often crowd out native plants. Glossy buckthorn, purple loostrike, Oriental bittersweet, Japanese knotweed, and multiflora rose are some of the common invasives in the area that thrive without natural controls, such as insects, diseases and competing plants. To learn more about invasive species and how you can fight this growing threat, visit SVT's web site.

### **LAND PROTECTION NEEDS**

While northwest Framingham has a large amount of conservation land, it is also a highly sought-after area for developers. Several of the bigger undeveloped parcels in the neighborhood could support large, residential developments. This would greatly impact the local ecology and scenery, in addition to putting more stress on the roads and other infrastructure in the community. Therefore the remaining unprotected parcels have become targets for conservation organizations and developers alike. SVT will continue to work on conserving these parcels.

---

### **DIRECTIONS**

#### **Wittenborg Woods**

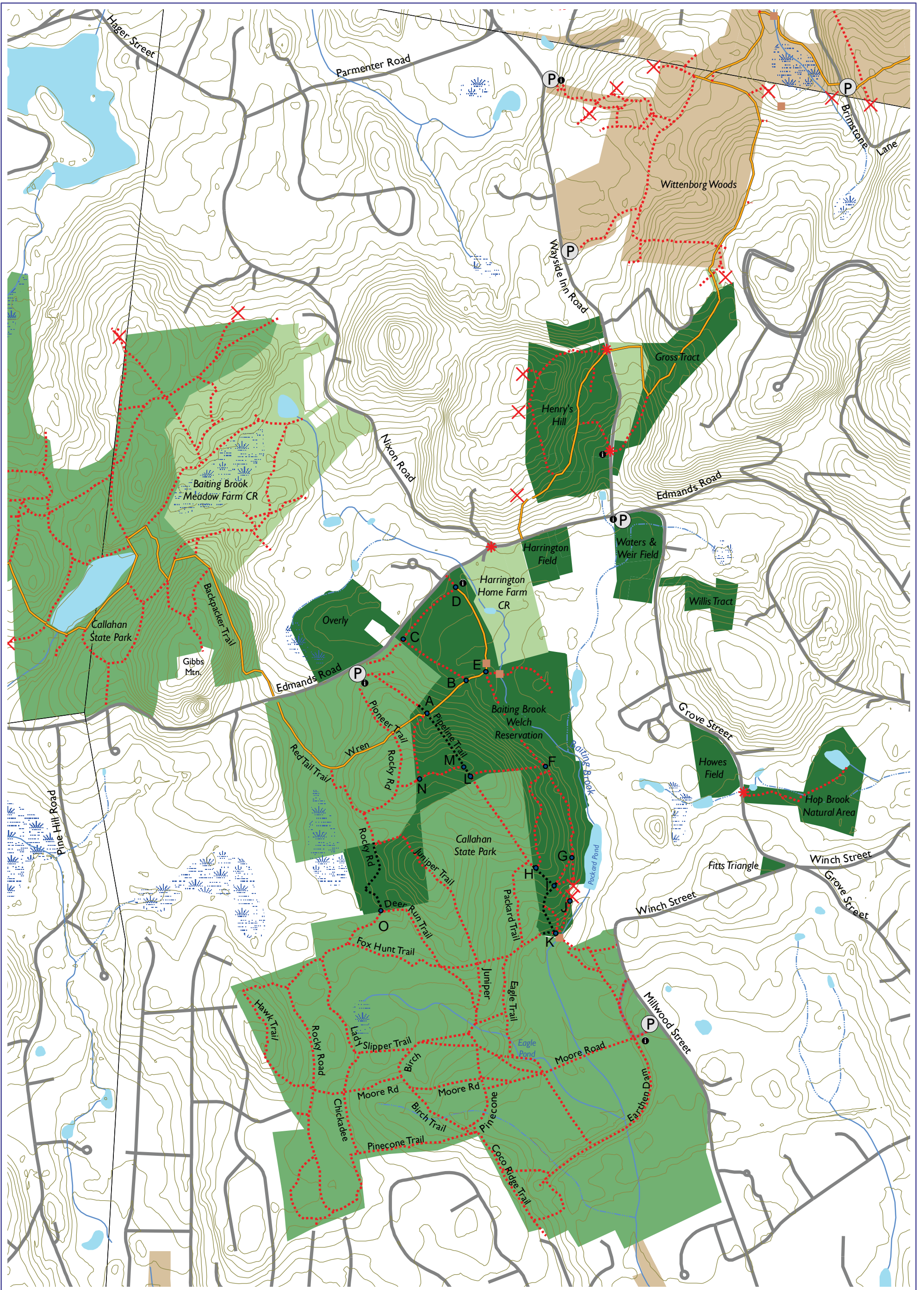
From Route 20 in Framingham, turn onto Bowditch Road. Stay left at the fork on Wayside Inn Road, and after 800 ft, there will be a parking lot on the left. A second parking lot will be another quarter mile down Wayside Inn Road on the left.

#### **Waters and Weir Field**

Continue south for approximately 0.6 miles on Wayside Inn Road, and the parking lot will be across from the intersection of Wayside Inn Road and Edmands Road.

#### **Callahan State Park (w/ access to Baiting Brook Welch Reservation)**

Turn right at the intersection of Wayside Inn Road and Edmands Road and continue about 0.7 miles. The parking lot will be on the left.



<b>P</b>	Parking		Perennial Stream
	Private		Intermittent Stream
	Roadside Parking		Pond/Lake
	Information		Wetland
	Bridge		Sudbury Valley Trustees
	Trails		Callahan State Park
	SVT Biking Allowed		Sudbury Valley Trustees CR
	Bay Circuit Trail		Municipal

# Sudbury Valley Trustees in Northwest Framingham

