

# **From Japanese Knotweed to Black-eyed Susans Gowing's Swamp, Concord MA**



SVT supports conservation in 36 communities of the Sudbury, Assabet and Concord rivers watershed.

# Picking Our Battles

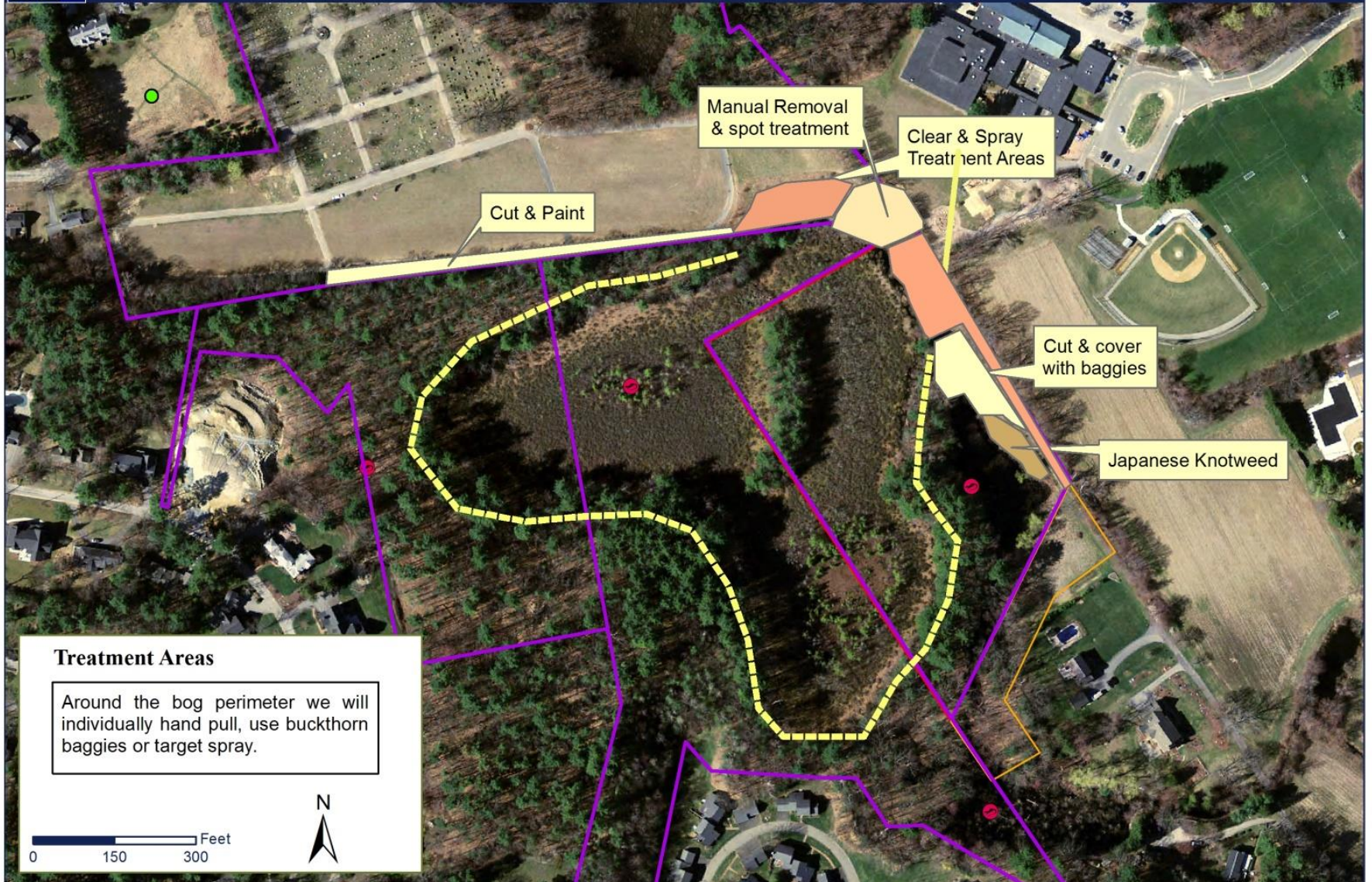
## Selection Criteria

- Regionally unique **ecosystem** (bog) with **historical** significance (Thoreau; Minute Man National Park); abutting a high profile **community resource** (Ripley Nature Playscape)
- Bog threatened by encroaching invasive plants and also impacting scenic attributes



# Gowing's Swamp Invasive Control Project

Concord, MA



### Treatment Areas

Around the bog perimeter we will individually hand pull, use buckthorn baggies or target spray.



# GOAL

- Reduce invasive cover in all areas around the bog to < 15 % cover.

# Mixed Invasives Scrub Overgrowth

- Partnership with Playscape and Concord Land Conservation Trust
- Heavy Clearing Work followed by herbicide applications



# Buckthorn Baggies

~ 50% effective



# BEFORE

Solid block of Japanese knotweed  
bordering vernal pool



**Early September 2017,  
flowering knotweed was  
sprayed with an 8% solution  
of Rodeo with Thinvert .  
Followed by 100% Rodeo  
injection of large green  
knotweed stems at the end of  
the month.**







**April, 2018**

**SVT staff and volunteers cut and cleared all of the dead Japanese knot weed stems. The stems were cut raked, bagged and piled into a larger dumpster.**



Hand spread native riparian seed mix.  
covered with weed free hay and watered.



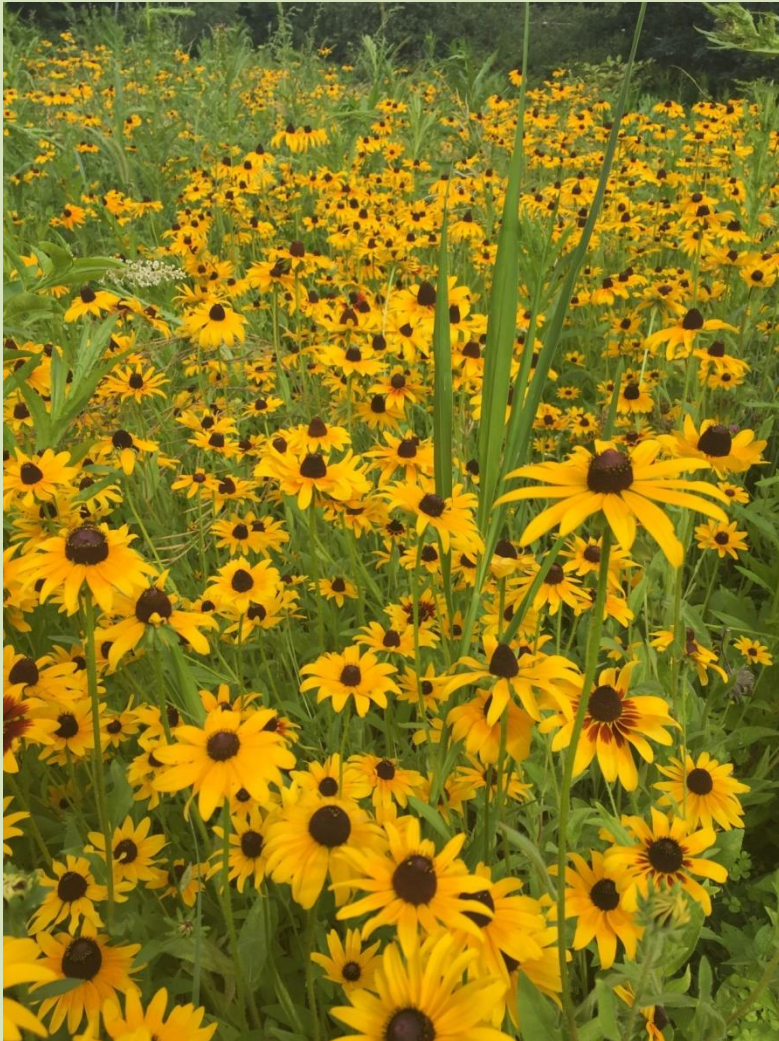
# June 2018

## Six weeks after seeding



**AFTER**

Early August 2018



# Maintenance Work

## Post initial treatment

- 2019 – Two selective herbicide treatments to the Japanese knotweed. Was very successful in targeting knotweed and not harming the native plants.
- 2020 – 2022
  - Knotweed growth had been stunted by the previous treatments
  - Nipping Knotweed 3 x per season

# August 2022 - 4 Years Later



# August 2022 - 4 Years Later

